

Mid Point Portfolio

Daniel Forthuber

May 2017

ARH 110

Chess Pavilion

Spring 2015

Daniel Forthuber



ARH 110 Chess Pavilion

Spring 2015

Daniel Forthuber

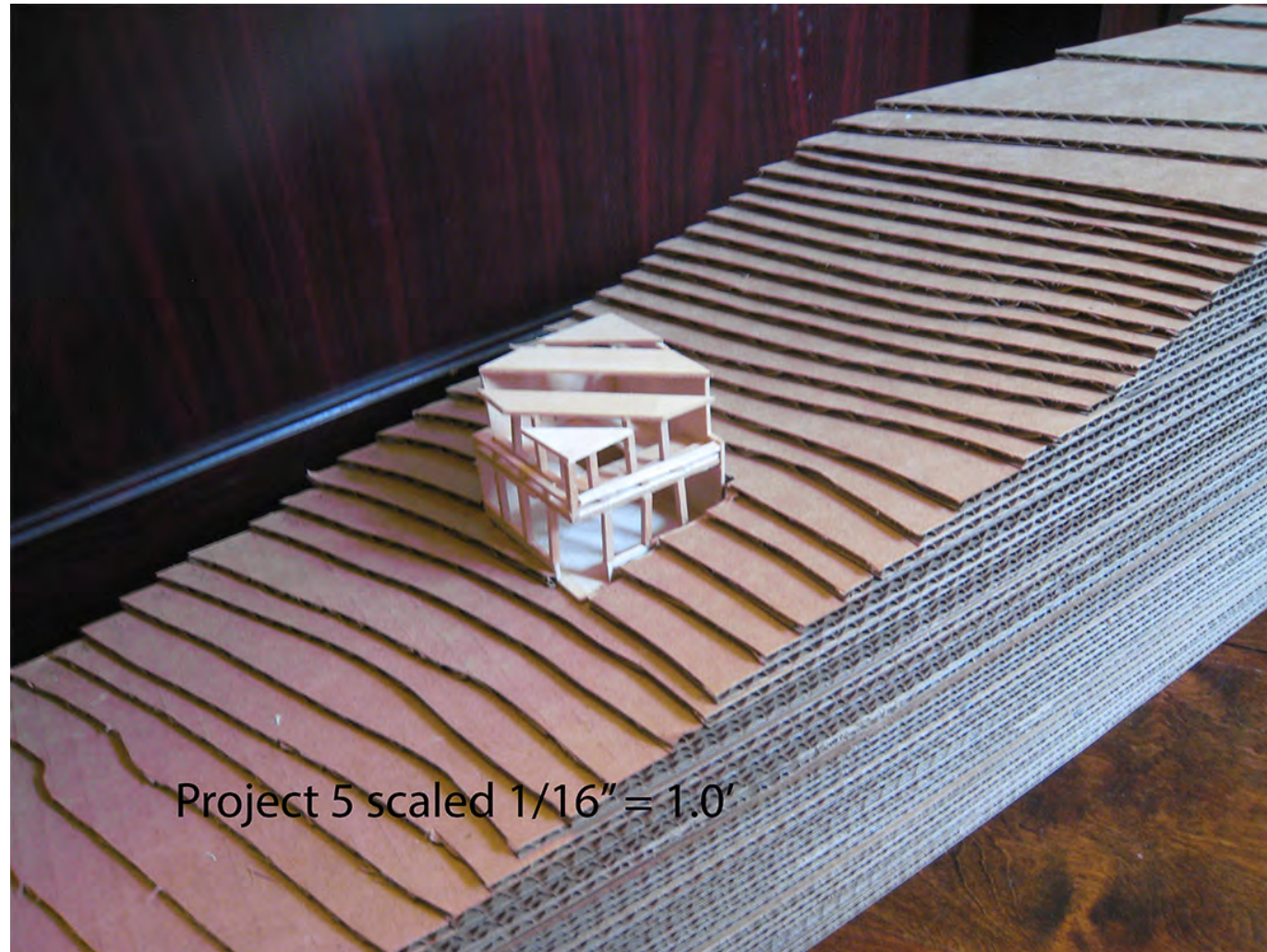


ARH 110 Chess Pavilion

Spring 2015

Daniel Forthuber

- 1/16th scale



Project 5 scaled 1/16" = 1.0'

ARH 150

Mario Botta Case Study

Fall 2015

Daniel Forthuber

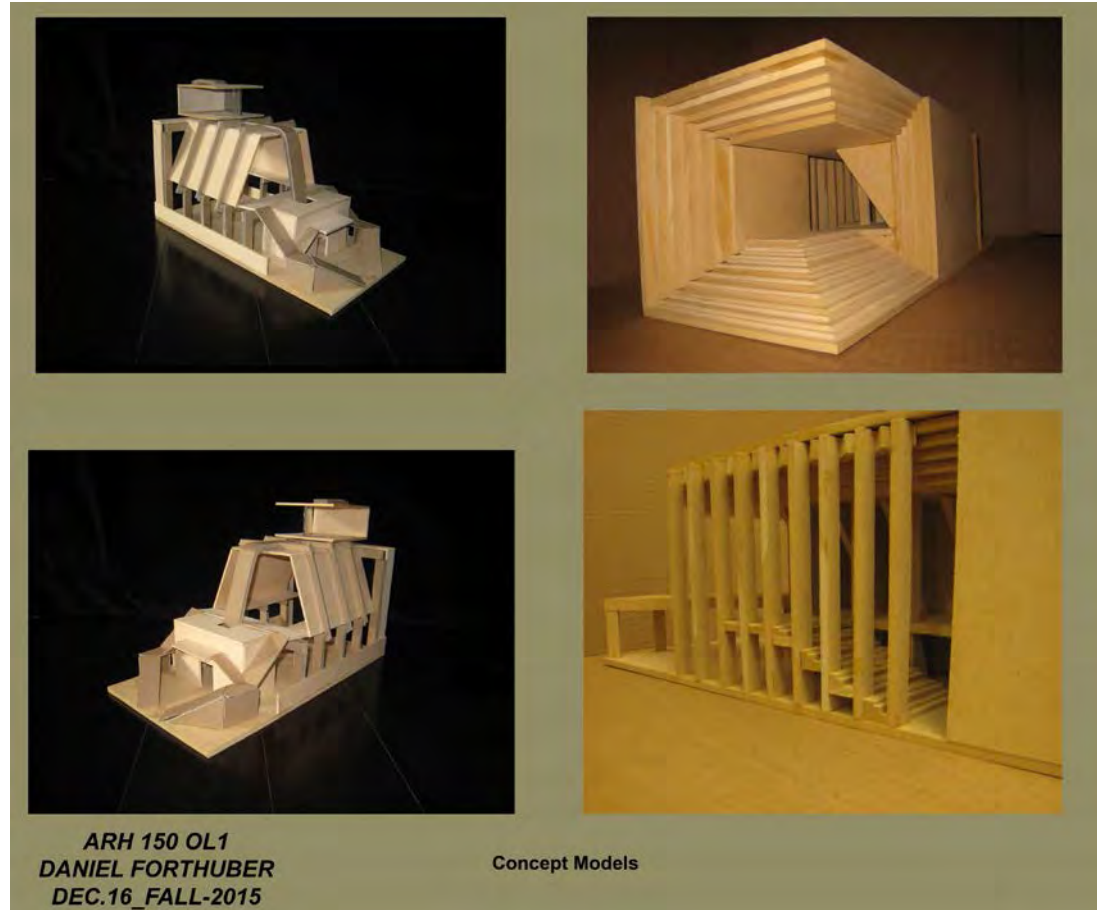


ARH 150

Project 3 Concept Models

Fall 2015

Daniel Forthuber

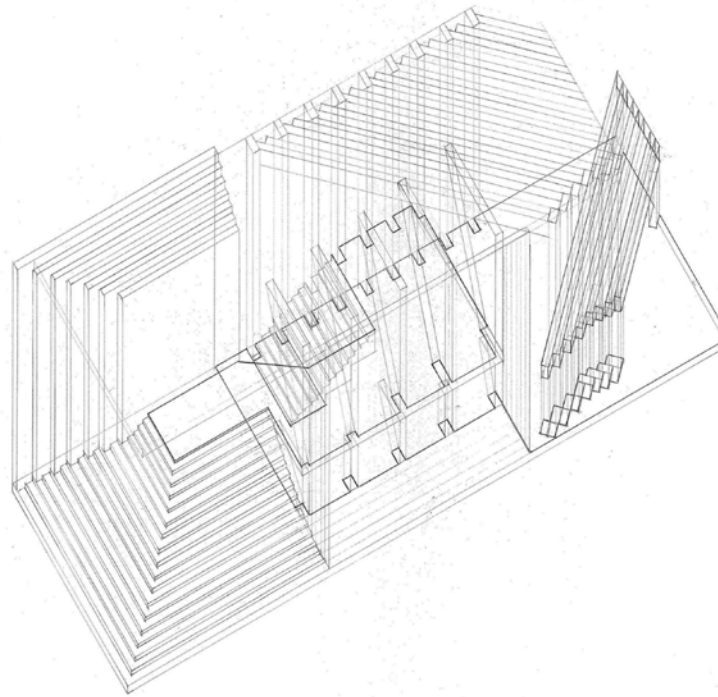


ARH 150

Project 3

Fall 2015

Daniel Forthuber



ARH 150 OL1
DANIEL FORTHUBER
DEC. 16_FALL-2015

PROJECT 3 ARH 150 OCT 27 2015
SCALE 1/8" = 1'-0" DANIEL FORTHUBER

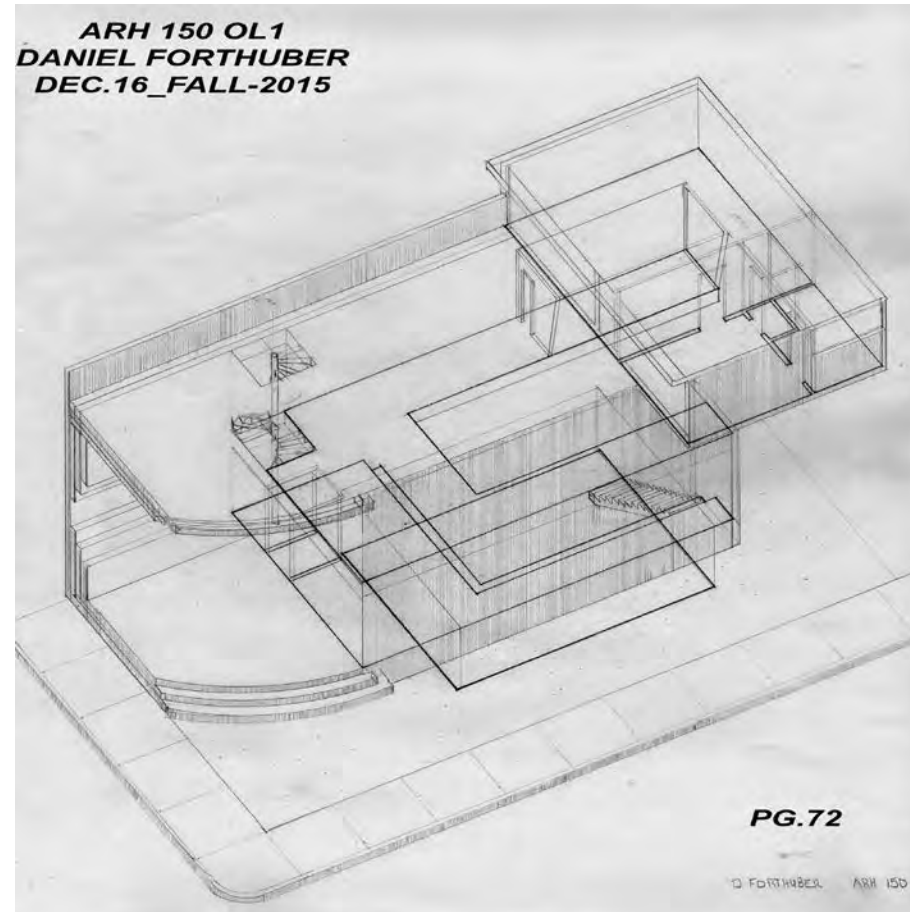
ARH 150

Final Project

Fall 2015

Daniel Forthuber

Hand drawn axon

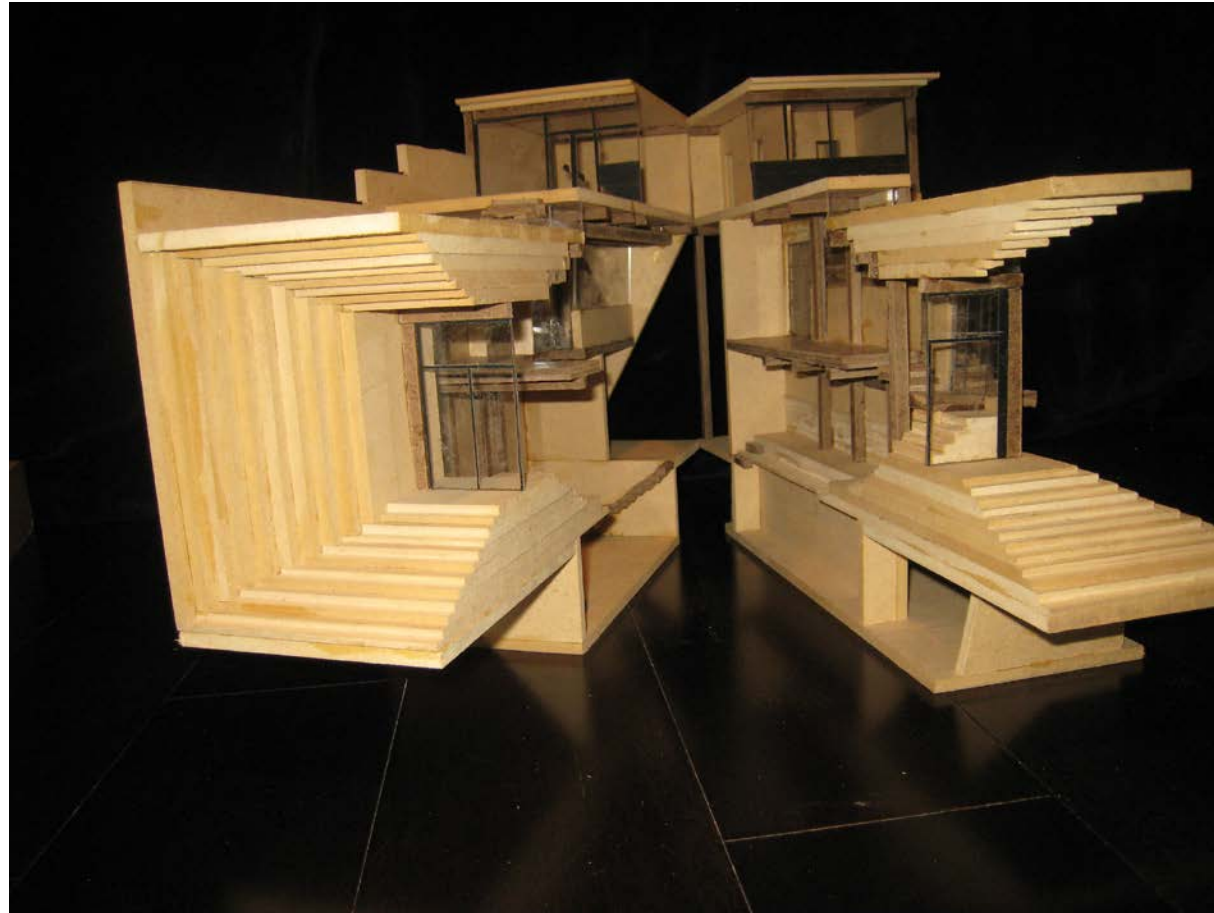


ARH 150

Final Project

Fall 2015

Daniel Forthuber

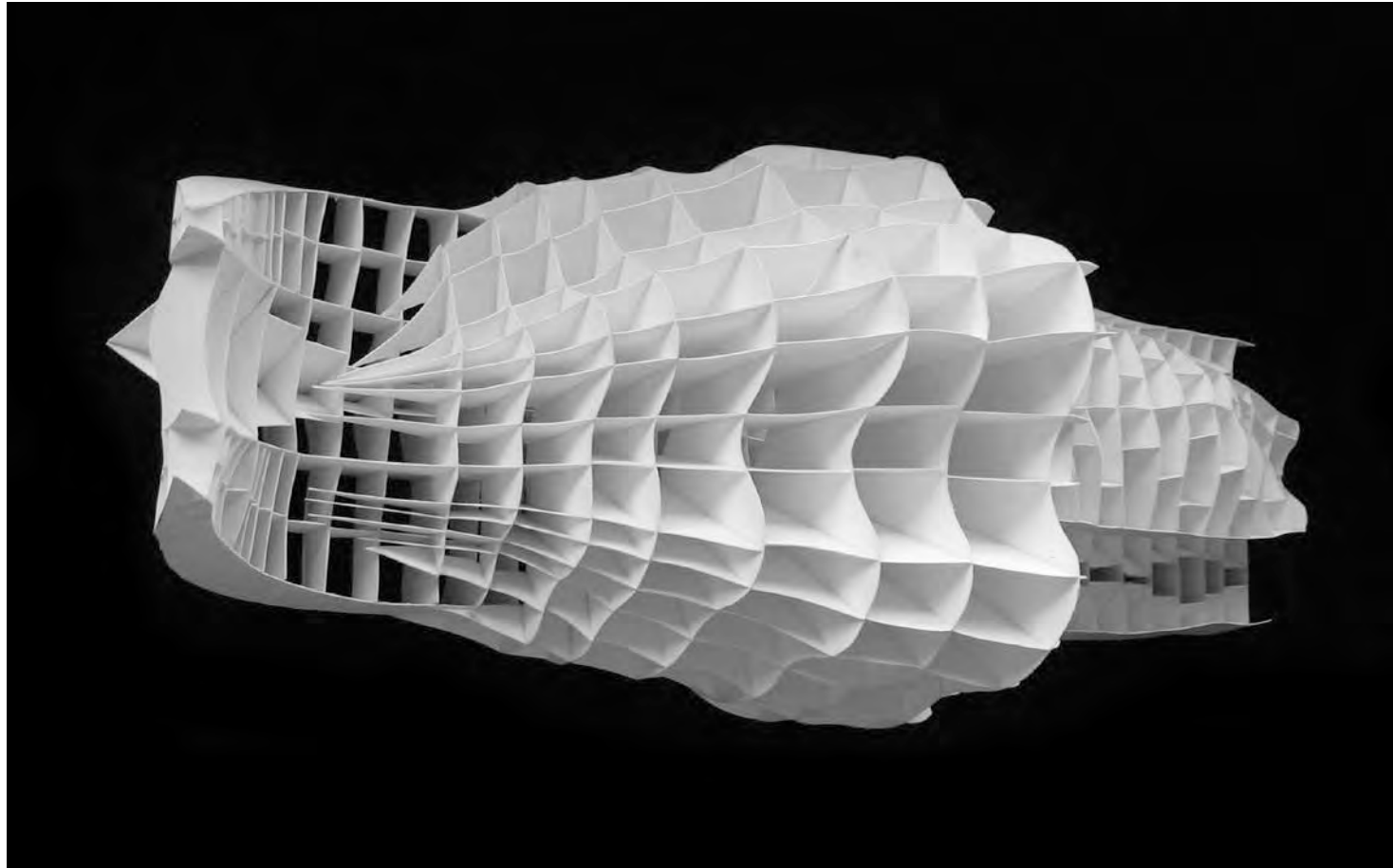


ARH 210

Project 1

Fall 2016

Daniel Forthuber



ARH 210

Final Project

Fall 2016

Daniel Forthuber



Aerial View of Exterior Circulation

ARH 210

Final Project

Fall 2016

Daniel Forthuber



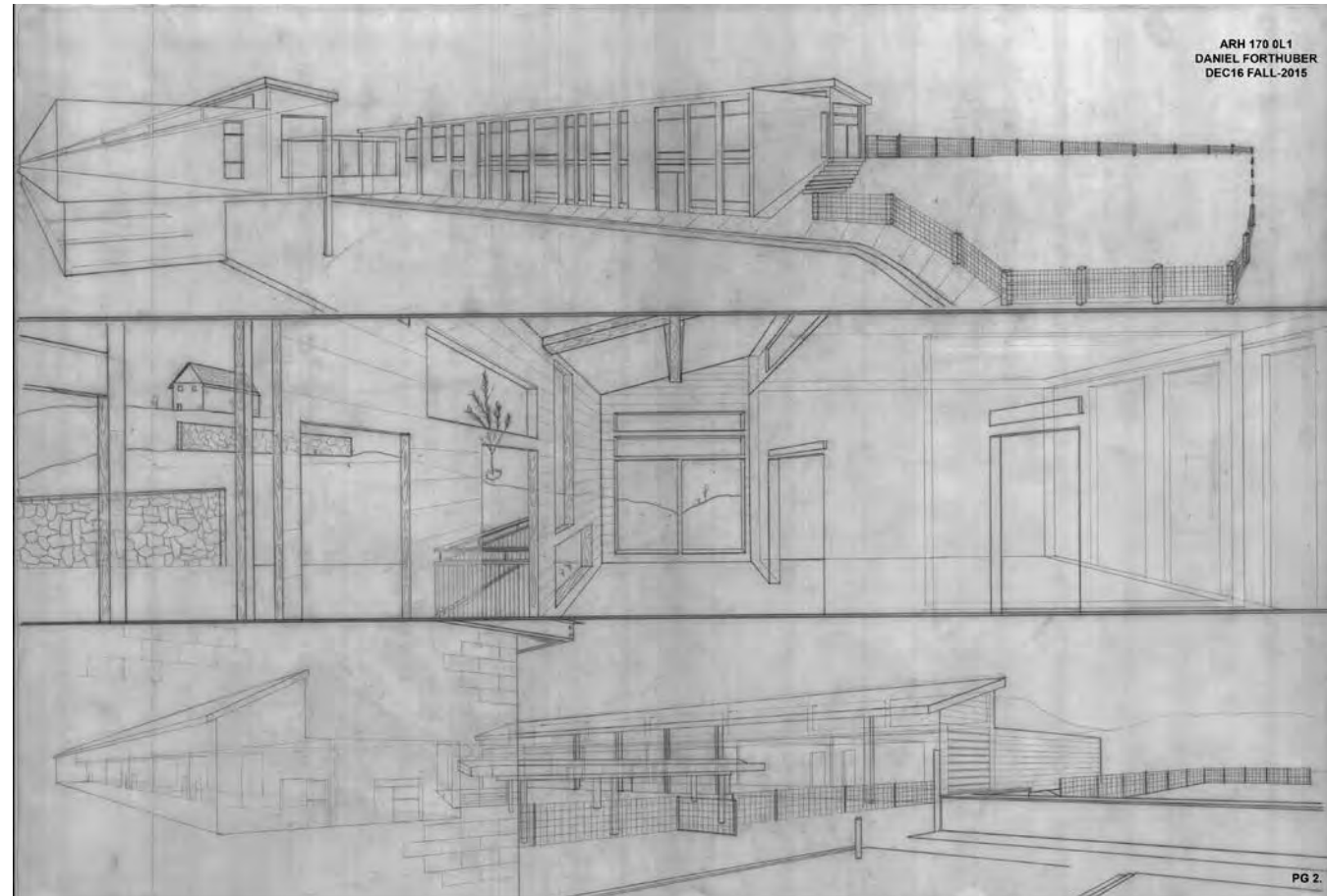
Waterfront Circulation and Penetration

ARH 170

Project 1

Fall 2017

Daniel Forthuber

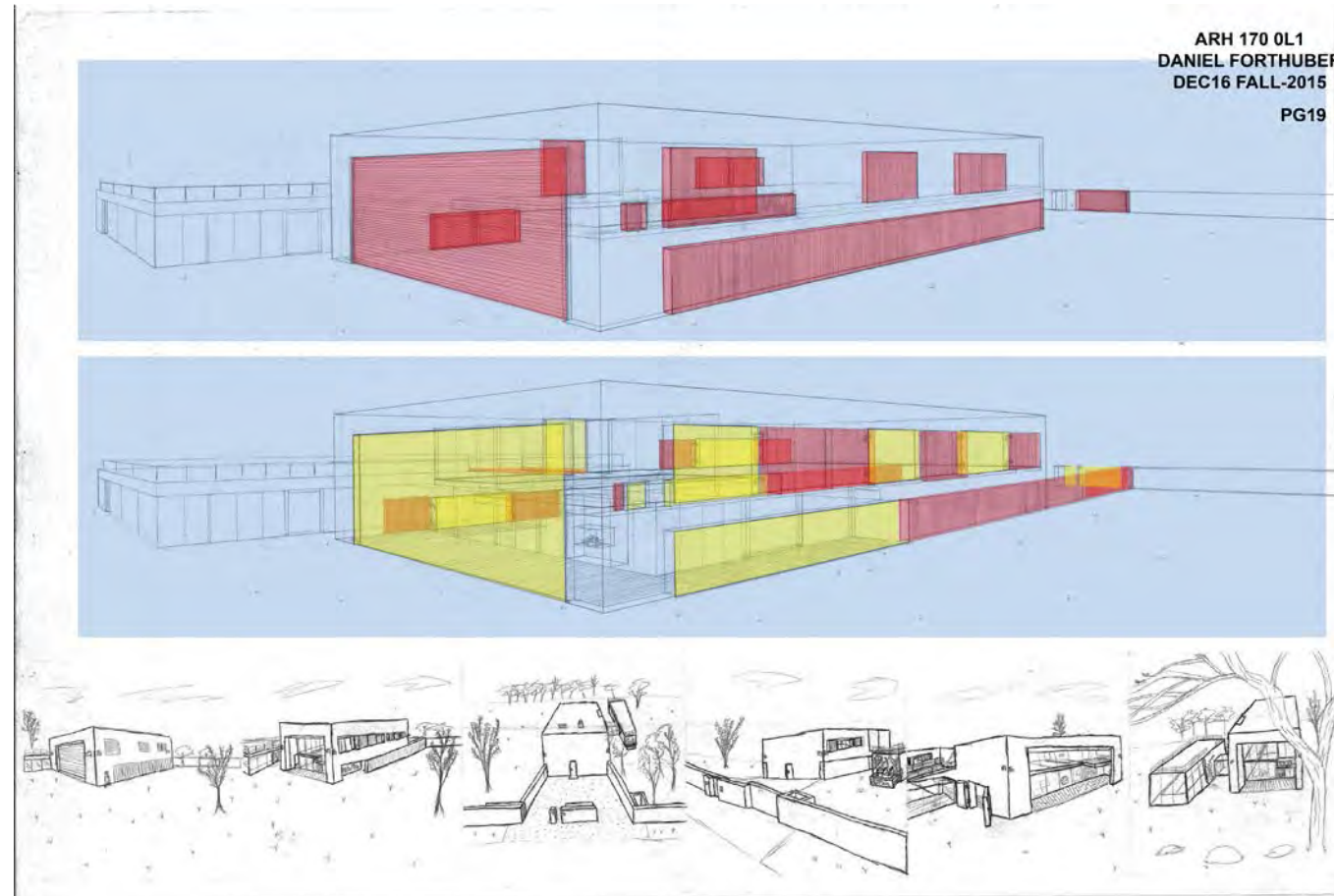


ARH 170

Project 2

Fall 2015

Daniel Forthuber

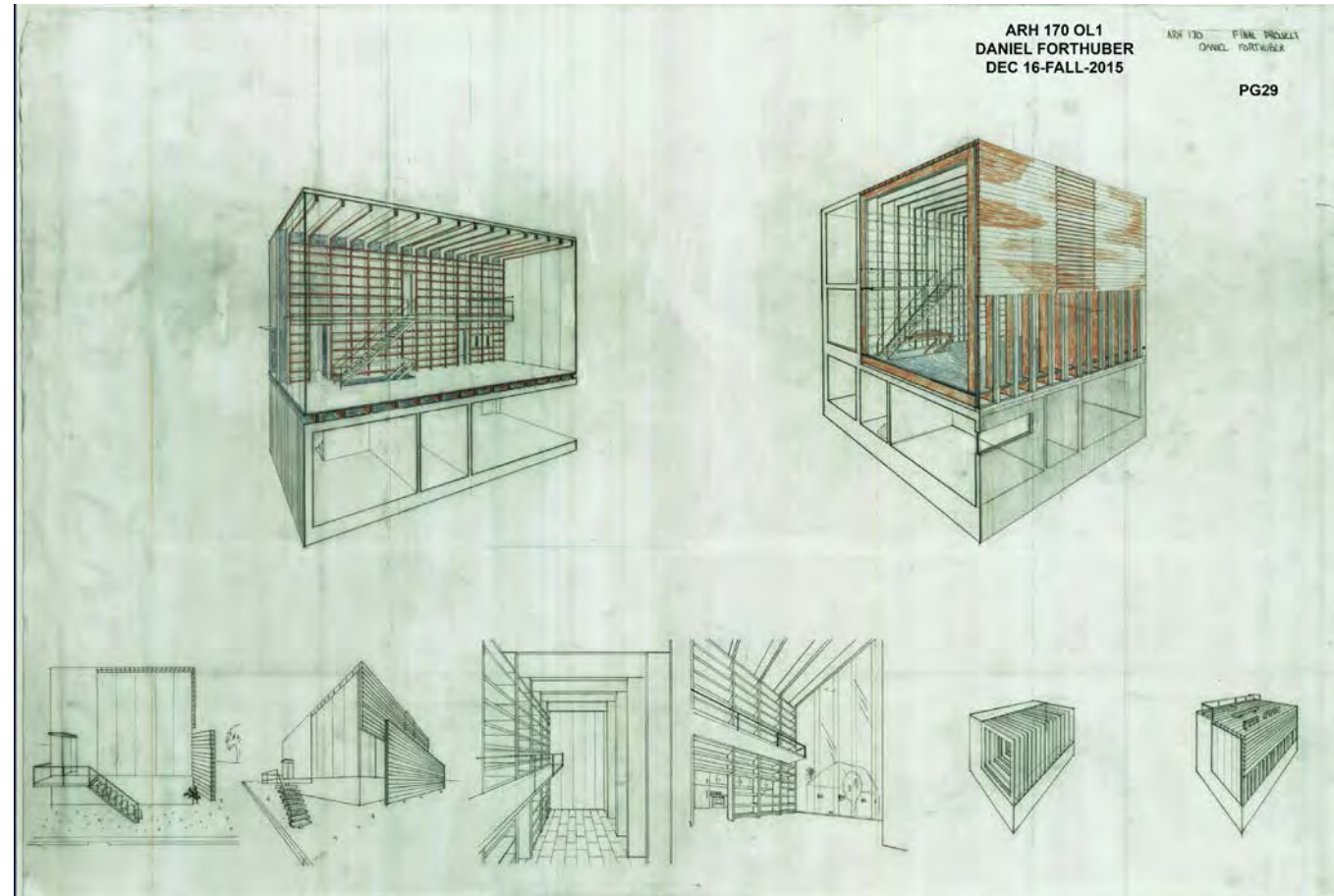


ARH 170

Project 3

Fall 2015

Daniel Forthuber



ARH 250

Spring 2017

Daniel Forthuber

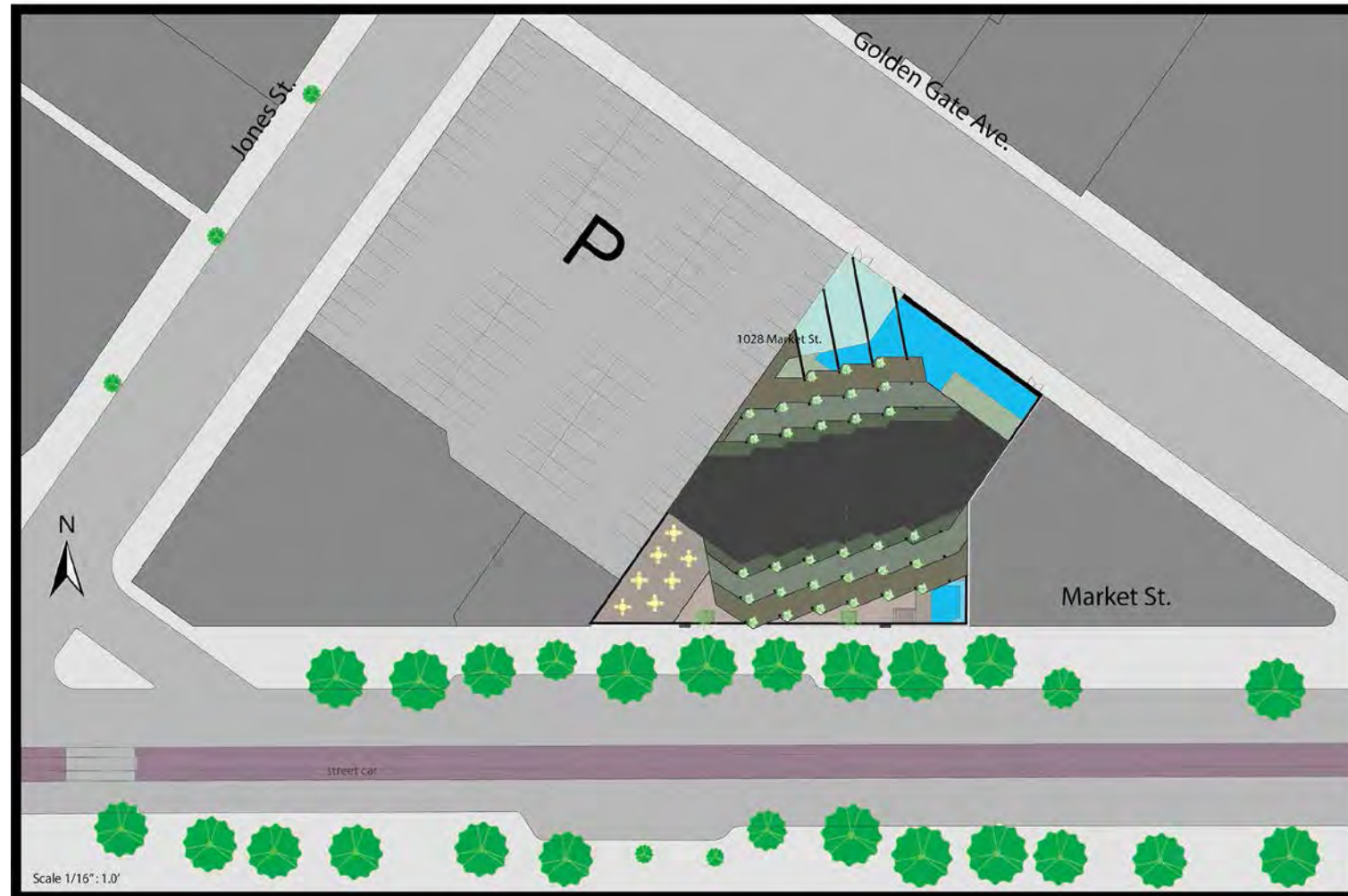
ARH 250

Final Project

Spring 2017

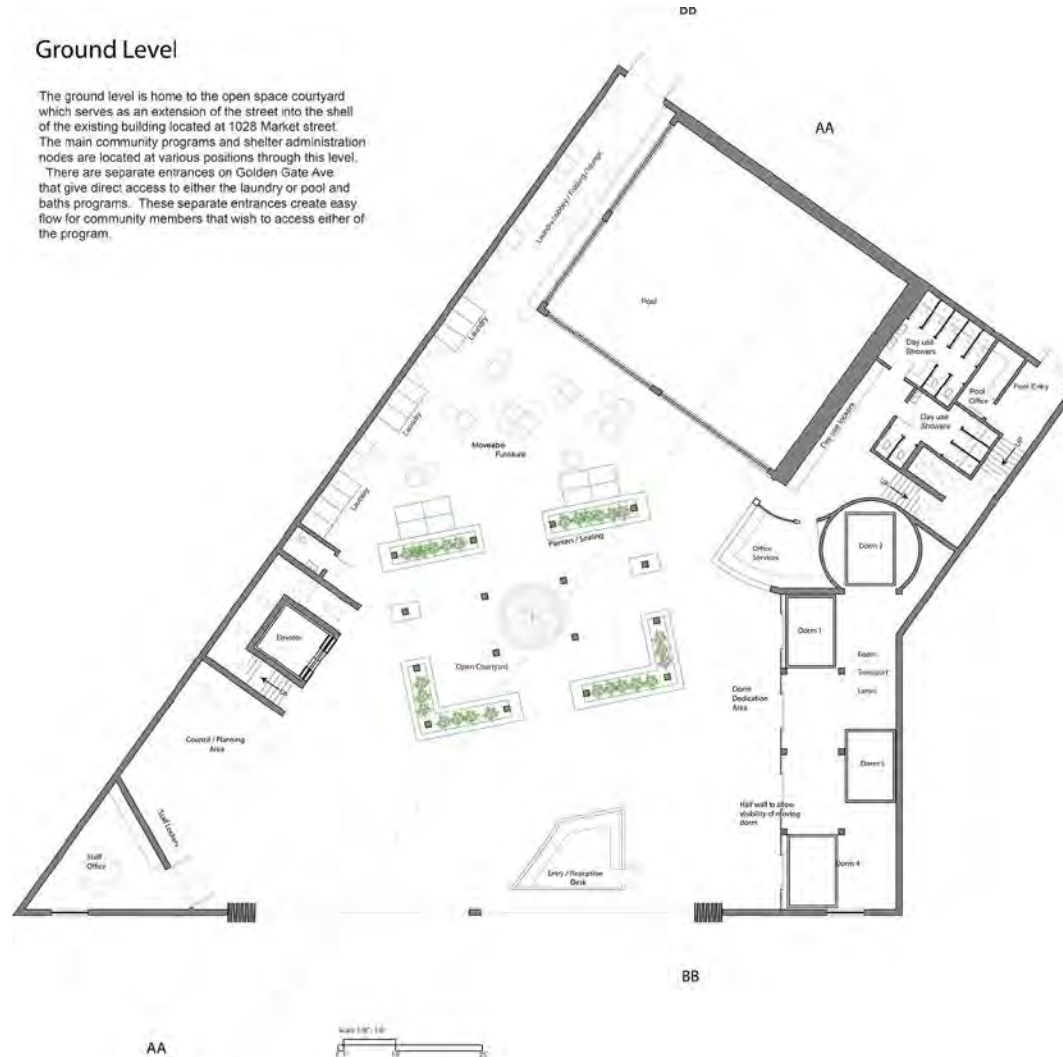
Daniel Forthuber

Site Plan

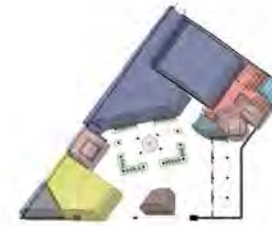


Ground Level

The ground level is home to the open space courtyard which serves as an extension of the street into the shell of the existing building located at 1028 Market street. The main community programs and shelter administration nodes are located at various positions through this level. There are separate entrances on Golden Gate Ave that give direct access to either the laundry or pool and baths programs. These separate entrances create easy flow for community members that wish to access either of the program.



- Private
- Public
- Shared Private/Public



Ground Floor Program

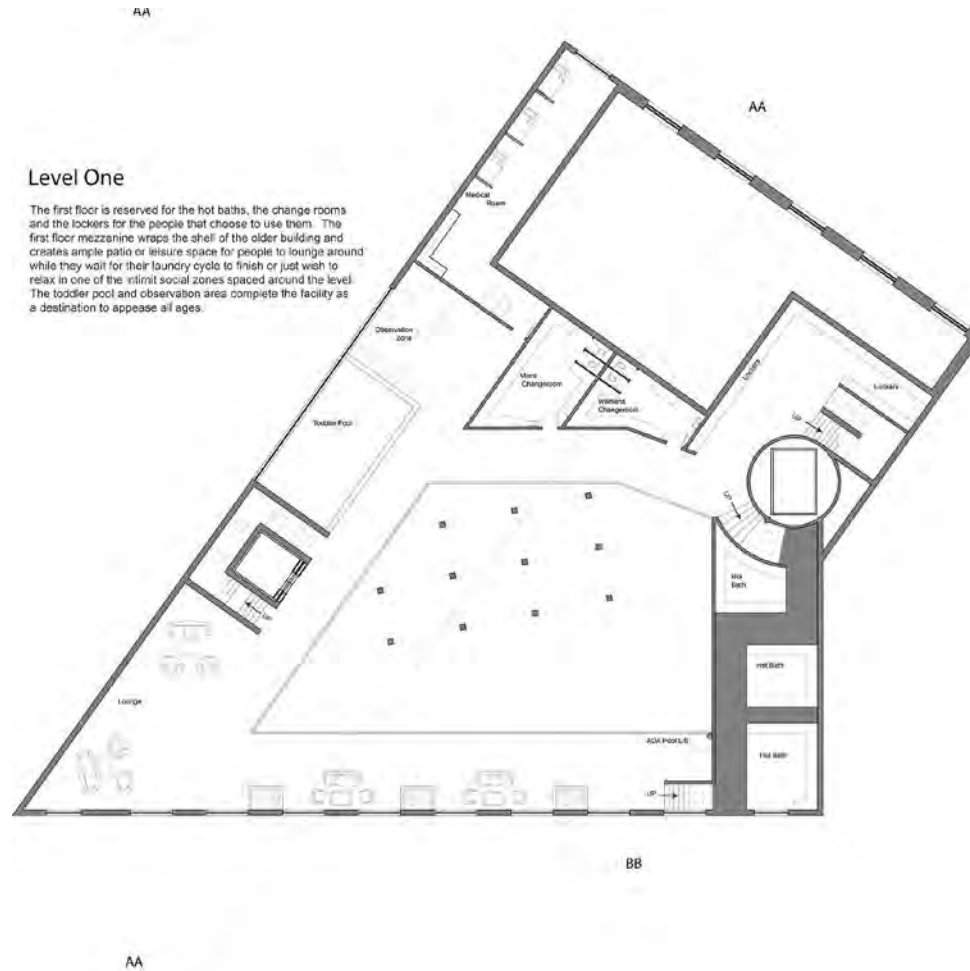
Community Program	118 sq. feet
Entry	71 sq. feet
Office	
Shelter Program	
Day use showers / restroom	725 sq. feet
Vertical Circulation	537 sq. feet
Office	165 sq. feet
Entry	176 sq. feet
Staff Office	317 sq. feet

ARH 250

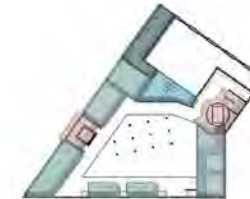
Final Project

Spring 2017

Daniel Forthuber



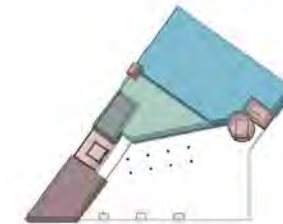
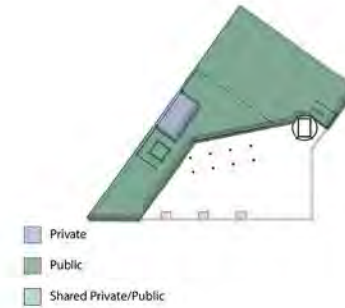
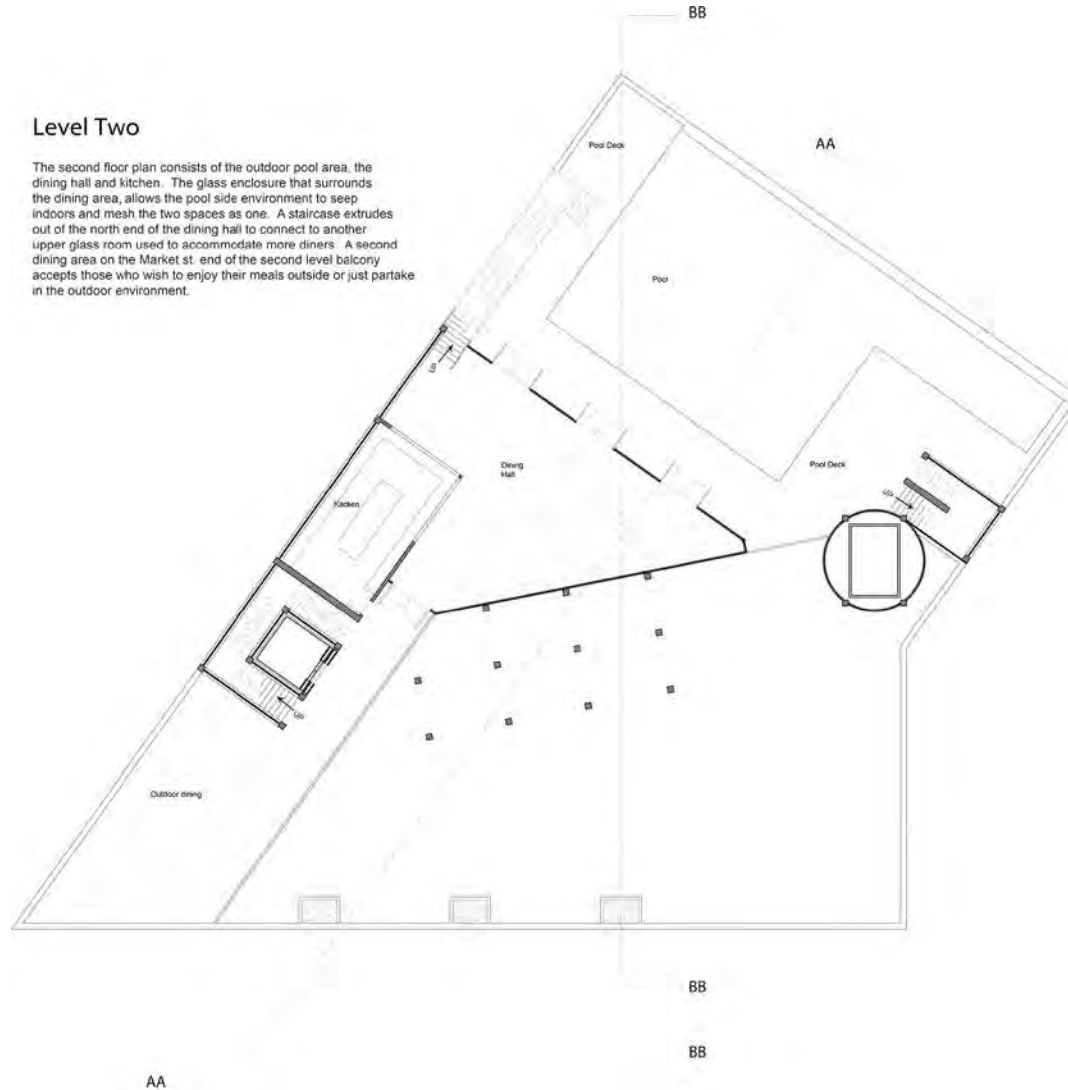
- Private
- Public
- Shared Private/Public



- First Floor Program
- Community Program
- Change Rooms 566 sq. feet
 - Baths
- Shelter Program
- Medical room 705 sq. feet
 - Vertical Circulation 537 sq. feet
 - Social Zones

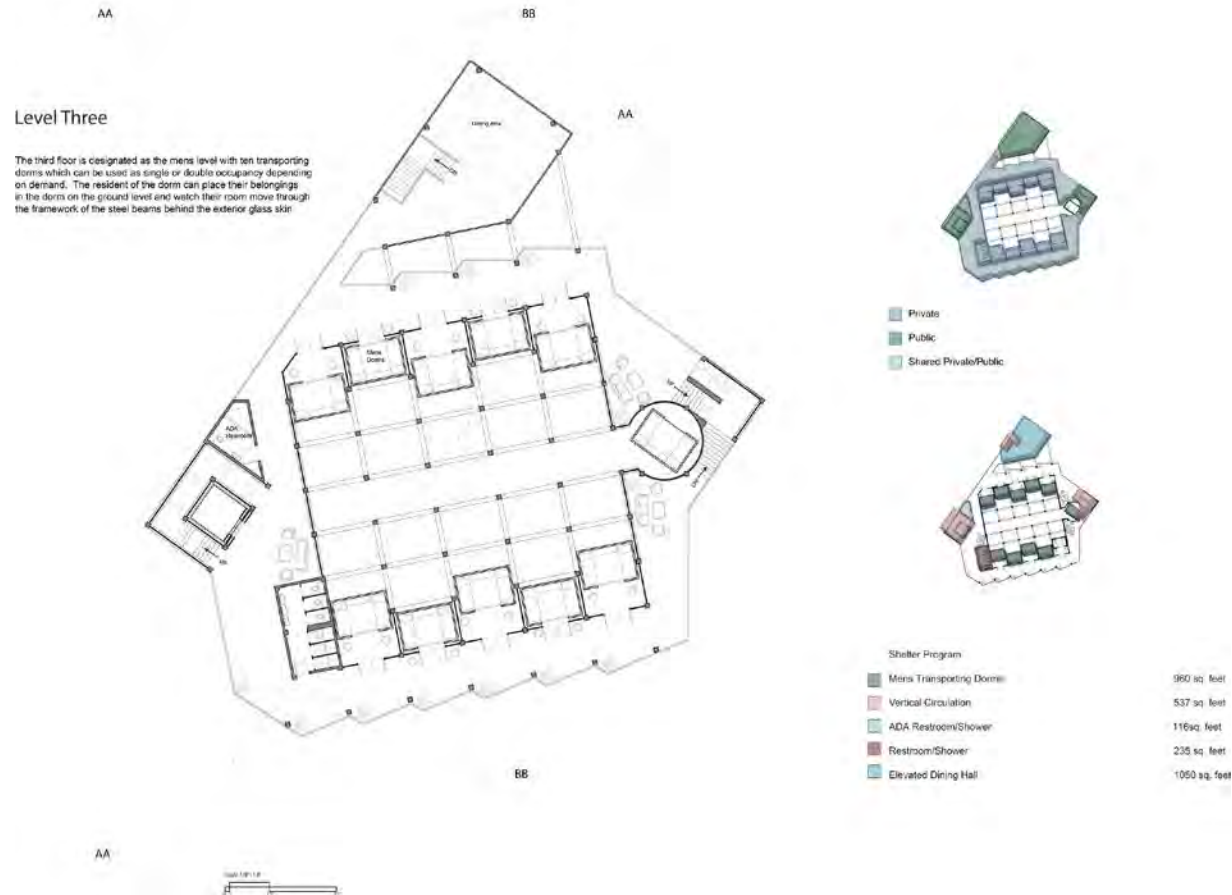
Level Two

The second floor plan consists of the outdoor pool area, the dining hall and kitchen. The glass enclosure that surrounds the dining area, allows the pool side environment to seep indoors and mesh the two spaces as one. A staircase extrudes out of the north end of the dining hall to connect to another upper glass room used to accommodate more diners. A second dining area on the Market st. end of the second level balcony accepts those who wish to enjoy their meals outside or just partake in the outdoor environment.



Second Floor Program

Community Program	
Pool	
Shelter Program	
Kitchen	500 sq. feet
Vertical Circulation	537 sq. feet
Dining room / Multipurpose	1560 sq. feet
Outdoor Dining	



ARH 250

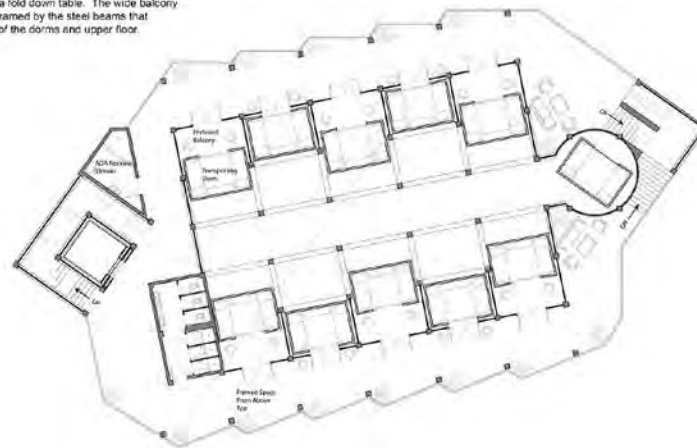
Final Project

Spring 2017

Daniel Forthuber

Level Four

The Fourth level is designated as the women's level holding ten transporting dorms which could be used as single or double occupancy depending on need. Each dorm contains two thin "Murphy" beds and a fold down table. The wide balcony and angled floor plates are framed by the steel beams that extend past supporting role of the dorms and upper floor.



- Private
- Public
- Shared Private/Public

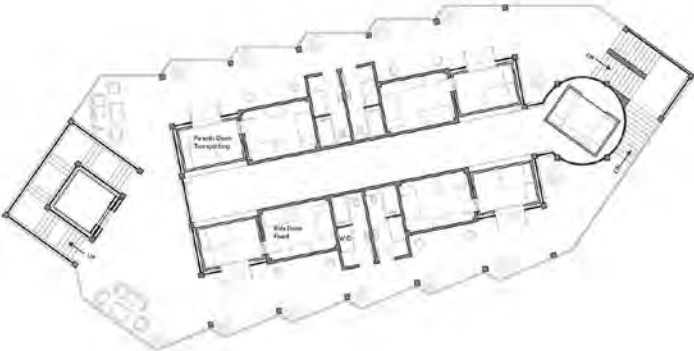


Shelter Program

Women's Transporting Dorms	960 sq. feet
Vertical Circulation	537 sq. feet
ADA Restroom and Shower	116 sq. feet
Restroom / Shower	235 sq. feet

Level Five

The Fifth floor contains four transporting dorms that the family unit can fill with their belongings on the ground level. The childrens rooms which are accessed through the transporting dorm once it is in place contain two bunkbeds each and a desk. Each family unit is designated a full four piece bath with laundry and 5 beds which can sleep 4 children and 2 adults.



- Private
- Public
- Shared Private/Public



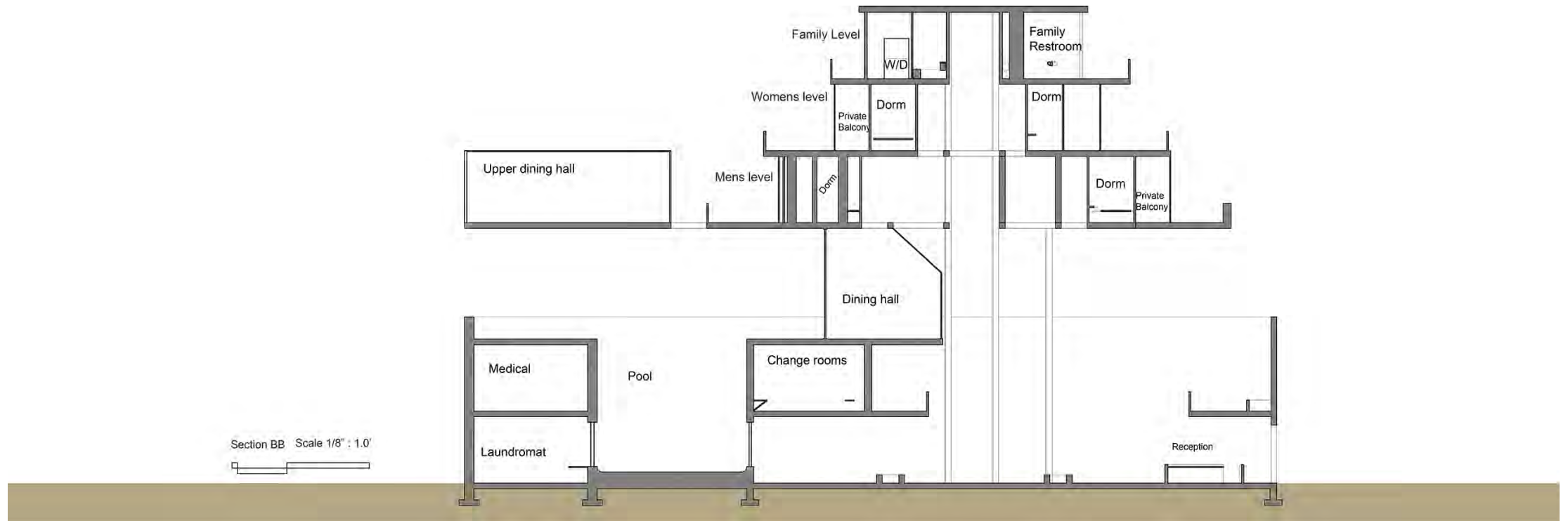
Shelter Program	
Parents Transporting Dorm	384 sq. feet
Vertical Circulation	537 sq. feet
Childrens Fixed Dorm	560 sq. feet
Family Restroom/Laundry	380 sq. feet

ARH 250

Final Project

Spring 2017

Daniel Forthuber

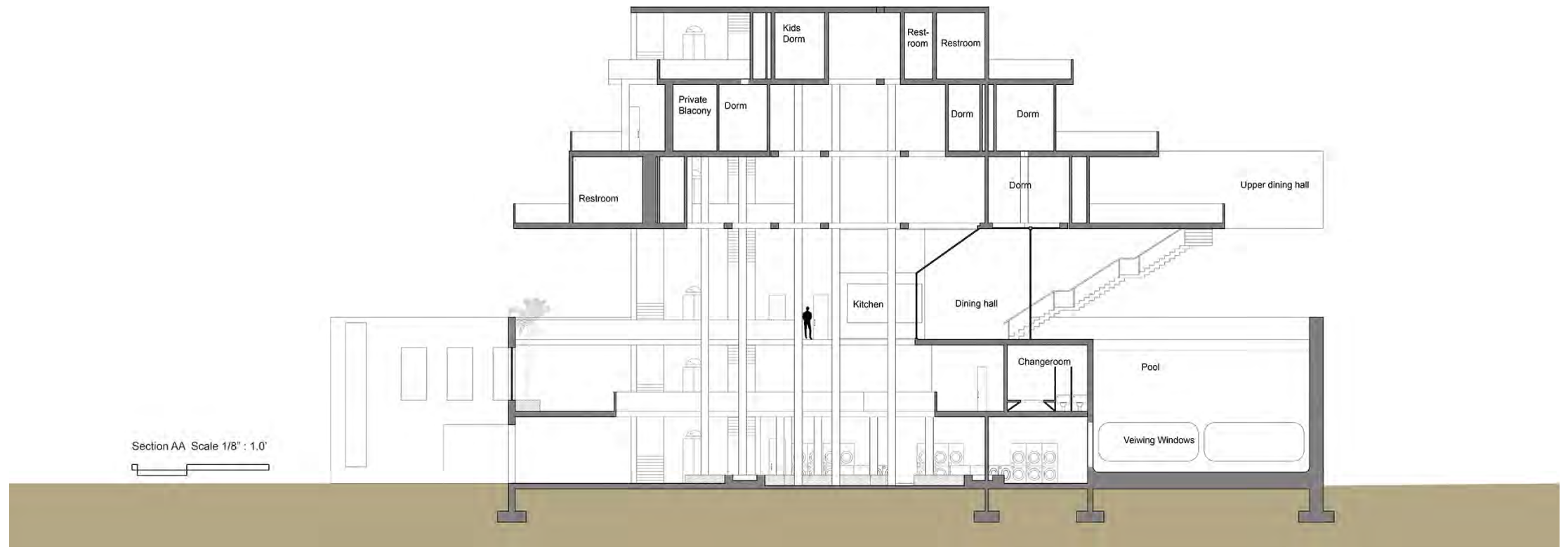


ARH 250

Final Project

Spring 2017

Daniel Forthuber



ARH 250

Final Project

Spring 2017

Daniel Forthuber



Scale 1/16" = 1 0'

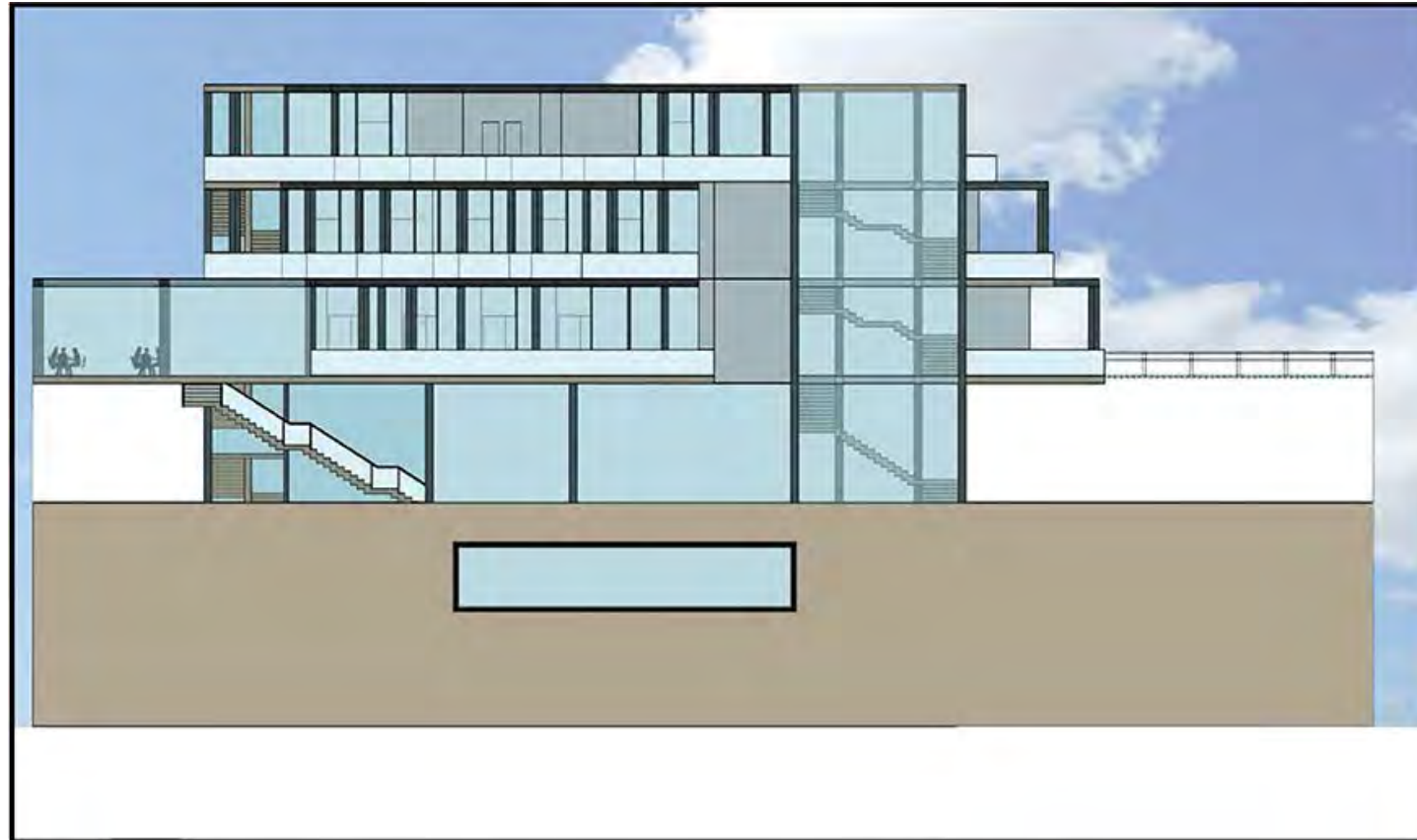
Golden Gate Ave Elevation

ARH 250

Final Project

Spring 2017

Daniel Forthuber



Scale 1/16" = 1.0'

Jones St. Elevation

ARH 250

Final Project

Spring 2017

Daniel Forthuber

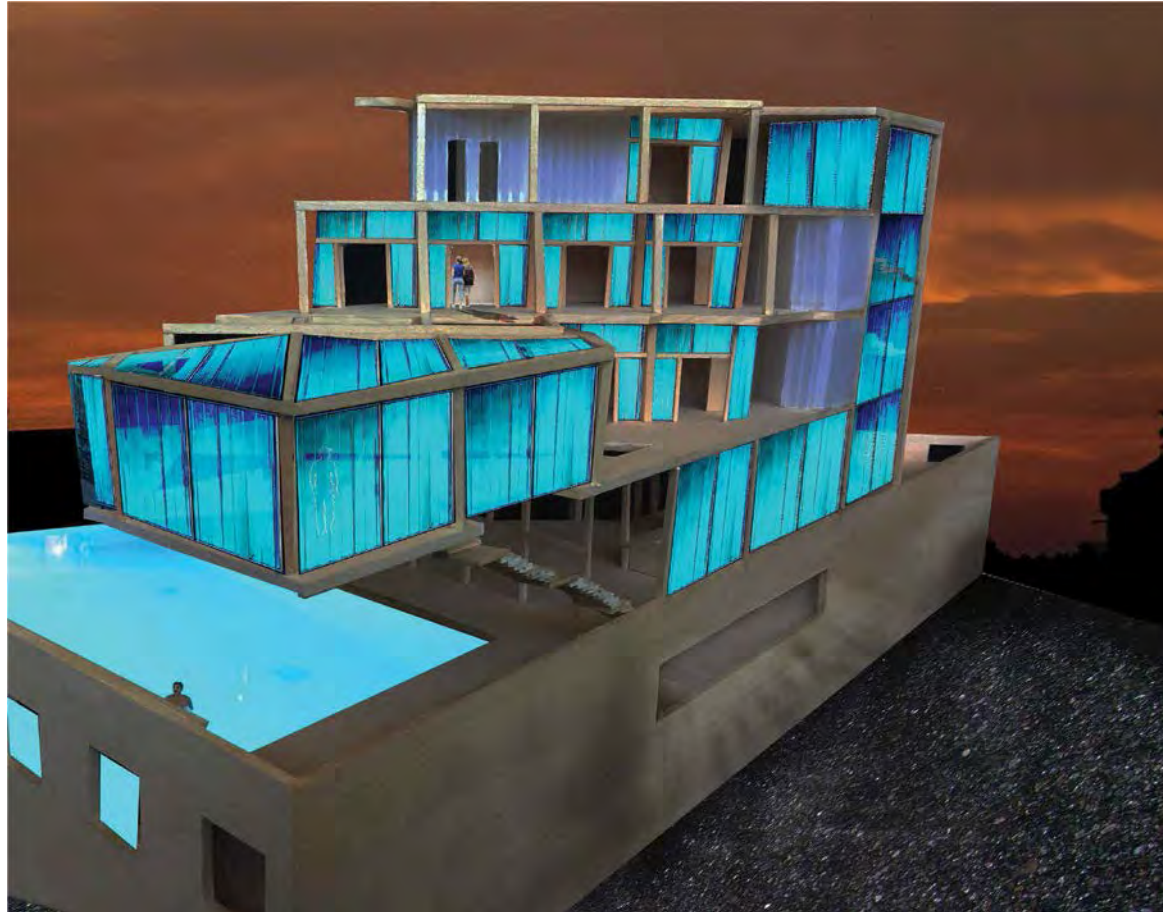


ARH 250

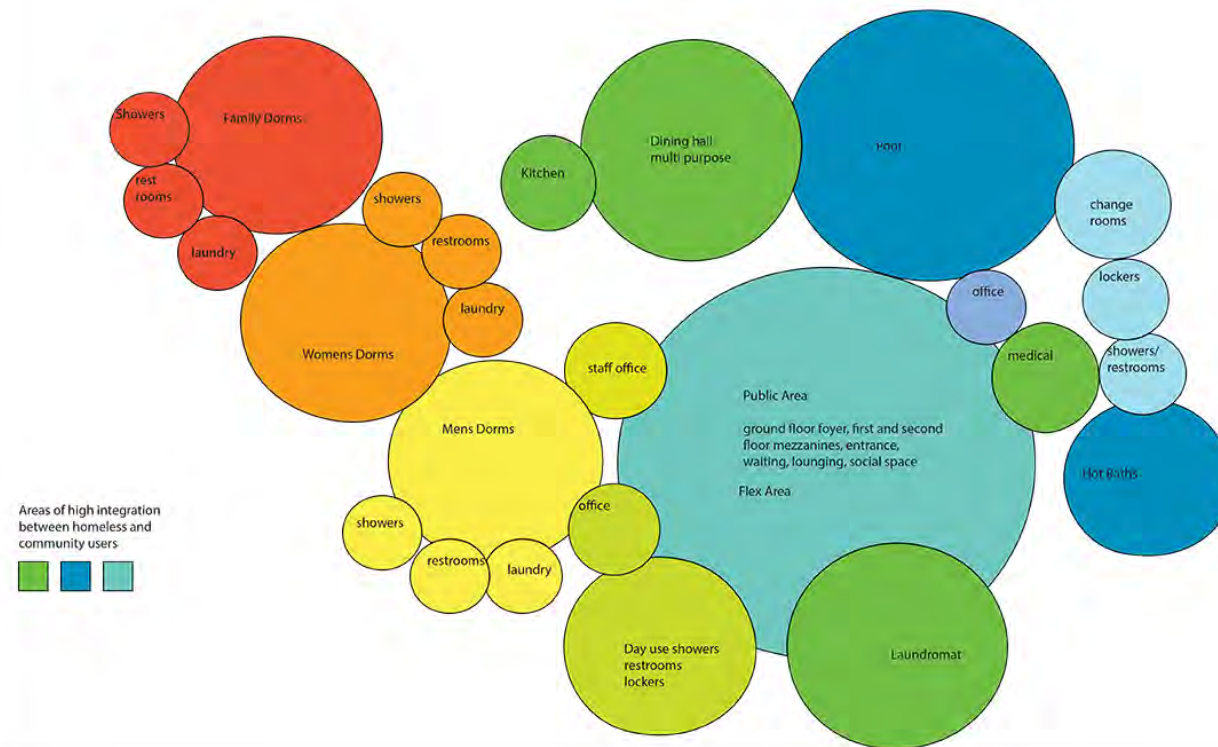
Final Project

Spring 2017

Daniel Forthuber



Homeless Shelter / SOAK Program Diagram



ARH 250

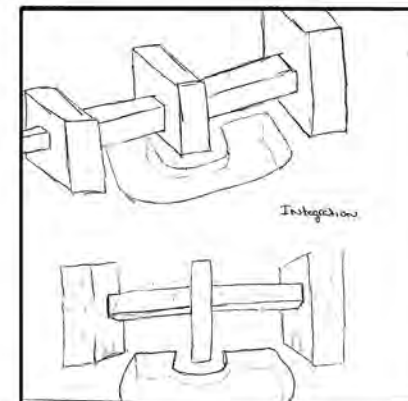
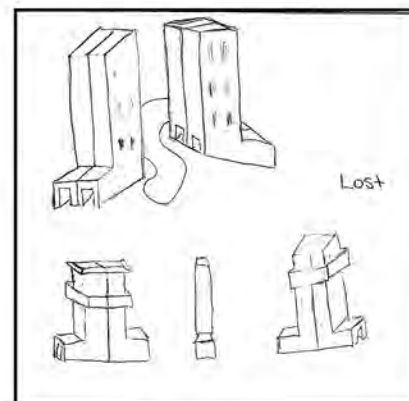
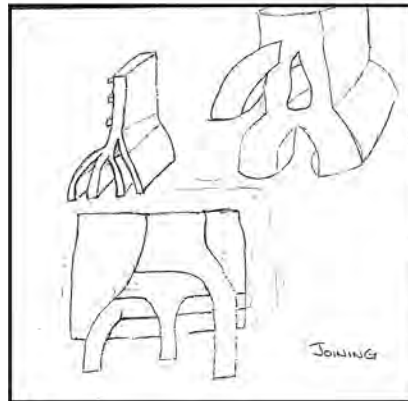
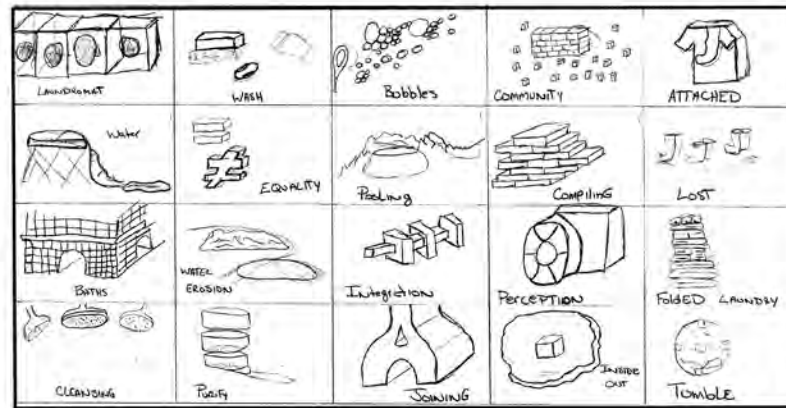
Final Project

Spring 2017

Daniel Forthuber

Concept and Model Board

The Parti Party



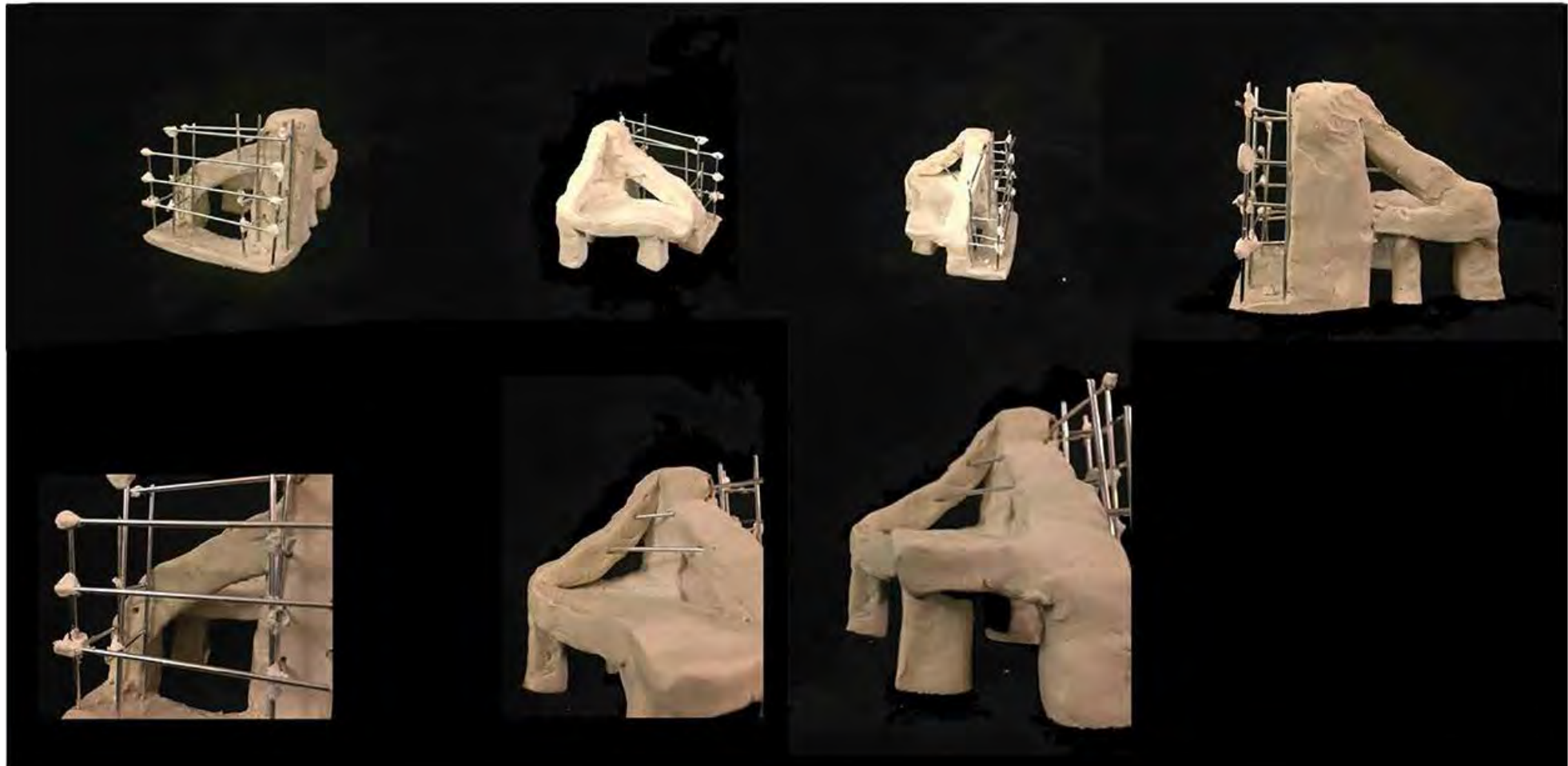
ARH 250

Final Project

Spring 2017

Daniel Forthuber

Initial Concept Model



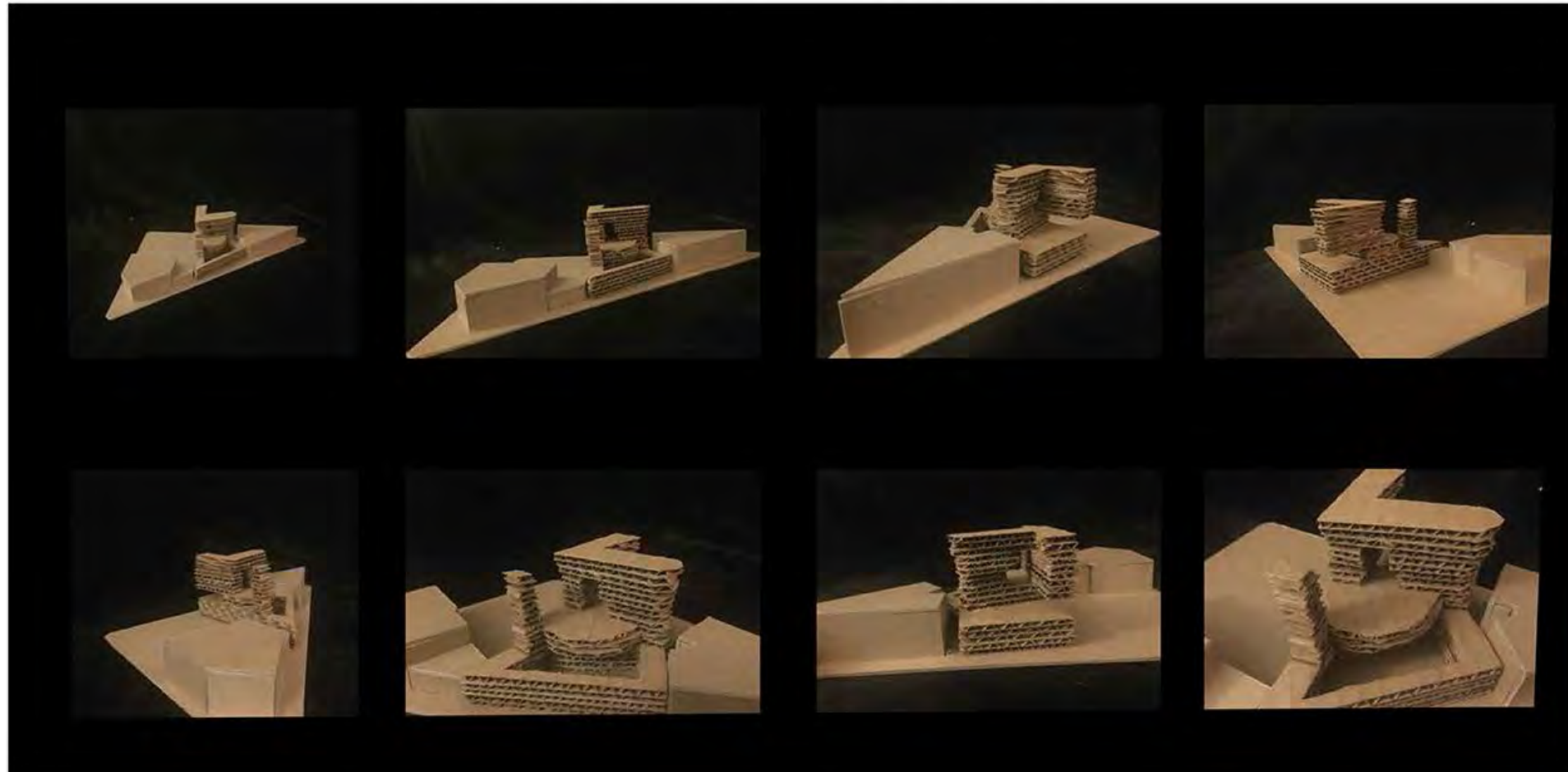
ARH 250

Final Project

Spring 2017

Daniel Forthuber

Site Concept Model Scale 1:40



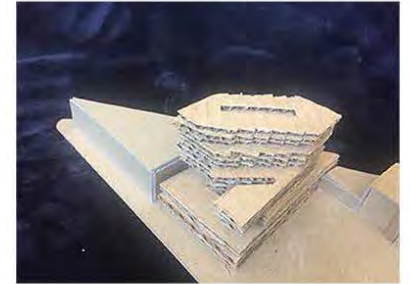
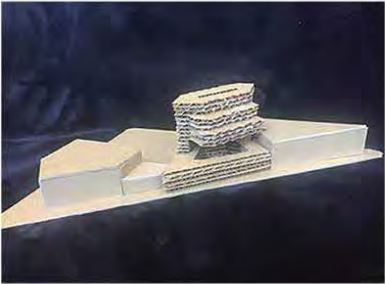
ARH 250

Final Project

Spring 2017

Daniel Forthuber

Secondary Concept Models

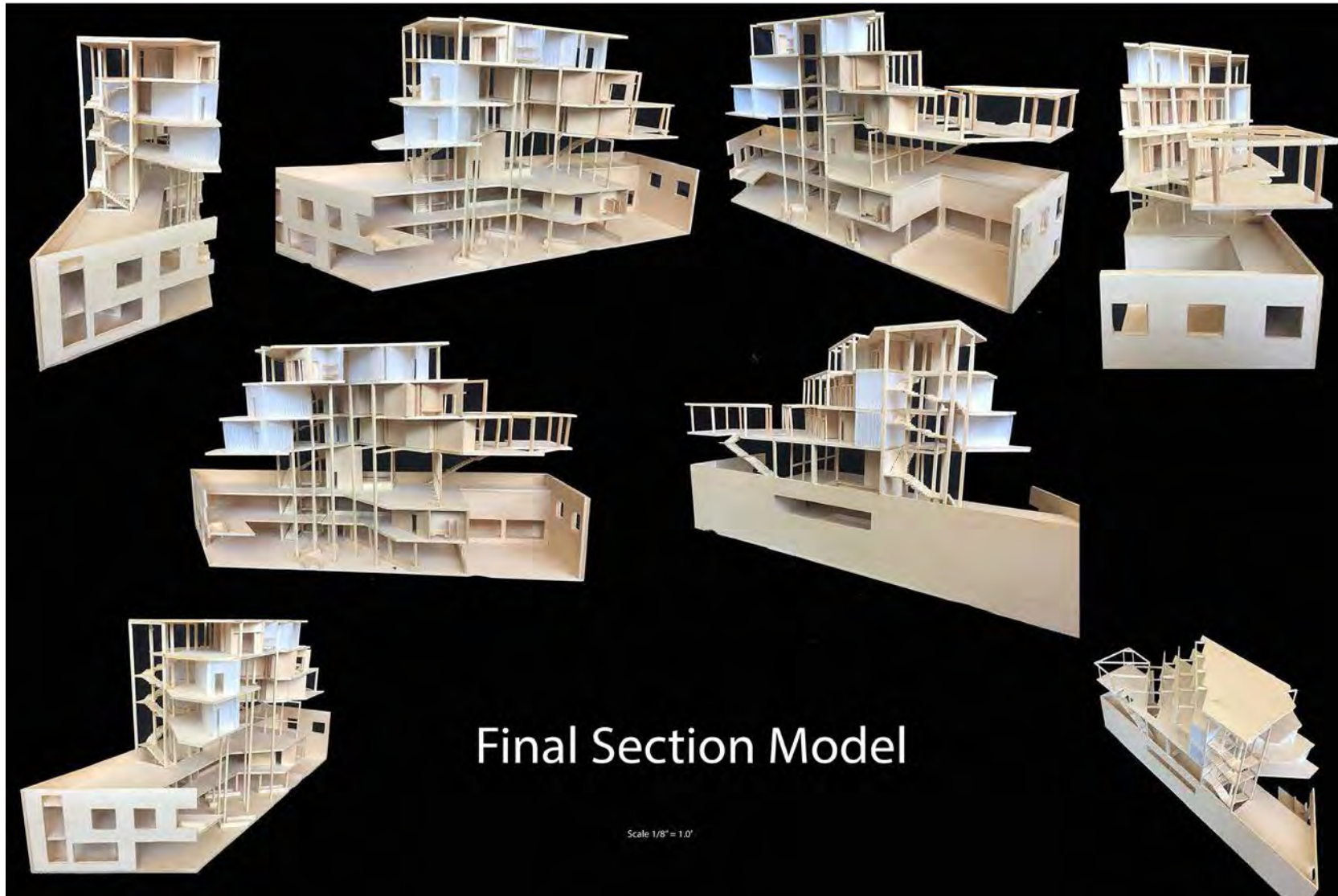


ARH 250

Final Project

Spring 2017

Daniel Forthuber



Thank You

